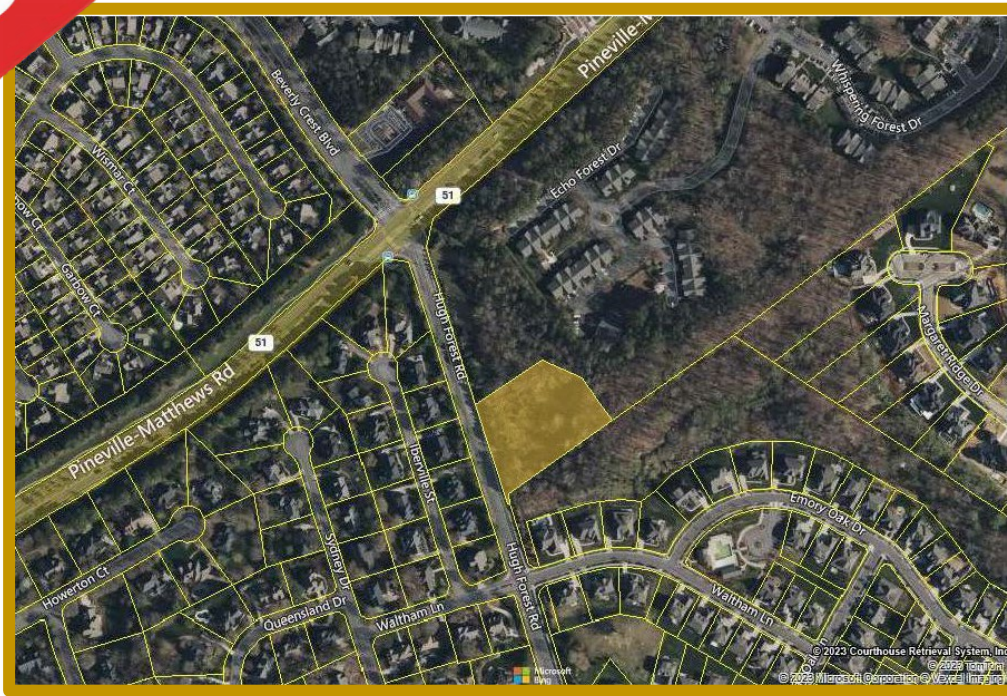


REDUCED

LAND FOR SALE

2097 Pineville-Matthews Rd



PRICE: \$1,100,000

CITY: Charlotte

COUNTY: Mecklenburg

AREA: South Charlotte

COMMENTS:

-[UDO Zoning](#)

-[Zoning At A Glance](#)

-[Charlotte Future 2040 Policy Map](#)

-No Environmental Report Available

SURVEY REFLECTS ACREAGE AS: 1.57+/-

TAX PARCEL ID: 22706107

ZONING: R-12 MF CD

UTILITY PROVIDERS: Water/Sewer-City of Charlotte, Power-Duke Energy, Gas-Piedmont Natural Gas

ROADS: Pineville-Matthews Rd is state maintained; Hugh Forrest Rd is city maintained

BERTOLINA

commercial real estate services inc.

Ian J. Bertolina, Bertolina Commercial Real Estate Services, Inc.

1850 East Third I St., Suite 310, Charlotte, North Carolina 28204

(704) 333-9881 | www.BertolinaCRESI.com | IB@BertolinaCRESI.com

Information contained herein including but not limited to acreage or square footage information, and all other information has been obtained from the owner of the property or other sources we deem reliable including, without limitation, property tax records, surveys, site visits, site plans and property inspection reports. We have no reason to doubt its accuracy, but we do not guarantee it. We do not make any representation or warranty regarding the accuracy of such information. Broker shall not be liable for any errors, omissions or inaccuracies in any of the information contained herein. All information contained herein and on our website, including prices, rents, expenses and similar items, is current as of the date of this publication or posting and is subject to change without prior notice.