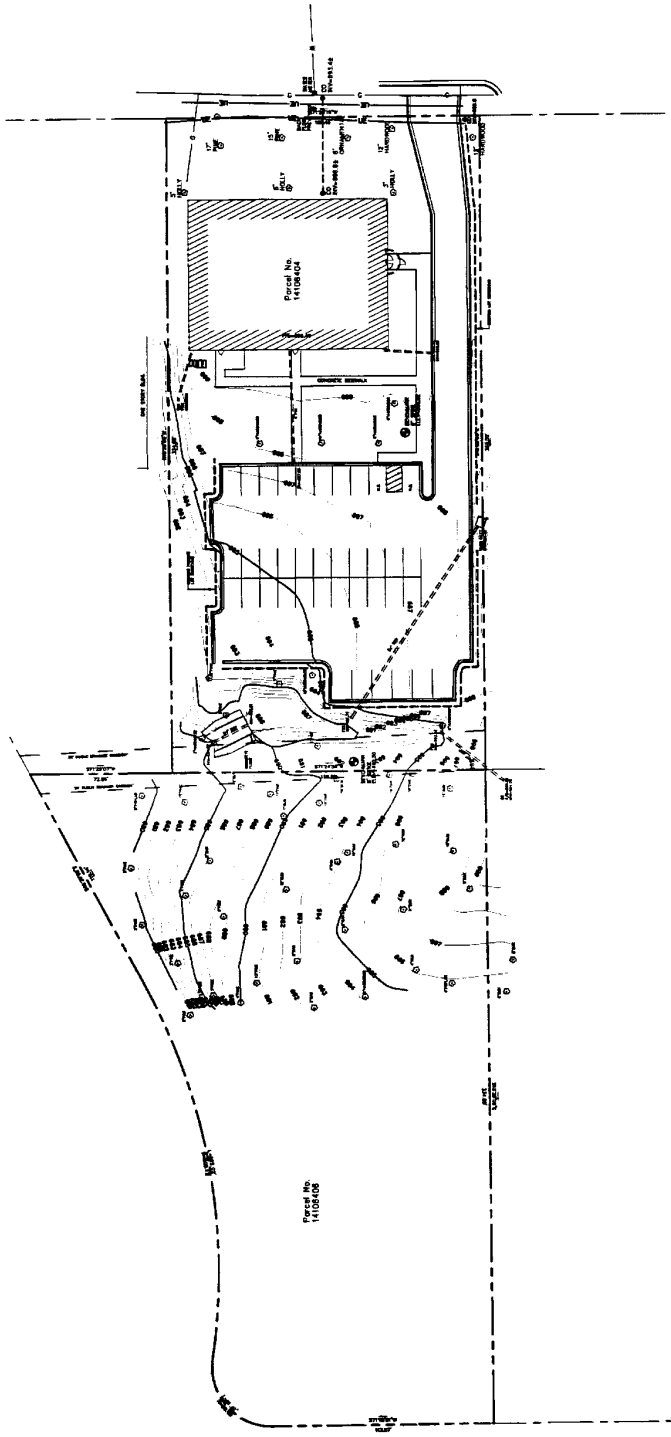


GEM
GEM Management, Inc.

LAND DEVELOPMENT AREA INSPECTORS
 Site: John Lomax 704.517.9601
 Urban Forester/Zoning: Kelly Robertson 704.607.8987
 Erosion Control: Ahmed Sabra 704.517.9983
 Senior Engineer: Robby Zim 704.336.5585

Property Zoning: B-2 (CD)
 Parcel No. 14108406
 Partition No. 14108406
 Owner: GEM Management, Inc.
 2021 Crane Beam Drive
 Charlotte, North Carolina 28217
 Phone: 704.357.6000 Fax: 704.357.1881
 Contact: Melvin S. Melton

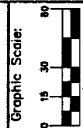
⚠ PER (RON JONES) THIS IS THE
 CORRECT PARTITION NUMBER.



NO PART OF THIS PROJECT IS TO BE CONSIDERED A FINAL DESIGN UNLESS IT IS APPROVED BY THE CITY OF CHARLOTTE. ANY CHANGES TO THIS PROJECT MUST BE APPROVED BY THE CITY OF CHARLOTTE. THIS IS NOT A CONTRACT DOCUMENT.

JMA

2012 Building and Parking Expansion
 Charlotte, North Carolina
 Existing Condition



Engineer: J. McGOVERN
 Designer: J. McGOVERN
 Title: J. McGOVERN
 Date: 2.20.2012

Revisions

No.	Date	Description
1	02/20/2012	Initial Design
2	02/20/2012	Final Design
3	02/20/2012	Final Design
4	02/20/2012	Final Design
5	02/20/2012	Final Design



Dept. No. _____
 Project Number: 535001
 Sheet No. 1 of 5